

Project Brief...

API Processing Facility

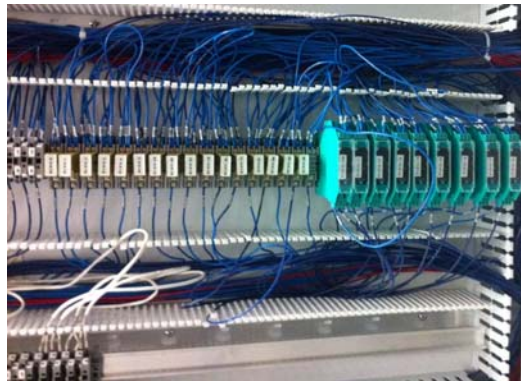
QSPEC Solutions

Quality
Service
Partnership
Experience
Commitment

For more information
on how you can
partner with QSPEC
Solutions, call
(913) 403-0988
or
(877) GO-QSPEC

Or visit us on the web
at WWW.QSPEC.com

Our client requested assistance with the automation implementation, including instrumentation and controls, for their new API processing facility in a repurposed pharmaceutical manufacturing building. The project required a turn-key approach, including full GAMP documentation (FRS, DDS, FAT, SAT), system implementation, commissioning and qualification. QSPEC Solutions delivered a design for an integrated manufacturing process involving both stick-built and modular skidded systems at both pilot and production scales.



The skids (CIP Skids, Waste Neutralization Skid, Centrifuge, UF Skids, Spray Dryers, Evaporator, and High Purity Water System) were configured to operate as standalone “Islands of Automation” and have extensive interaction with the facility process control system. The pilot and production processes were controlled by dedicated PLC’s that were configured to provide operator-initiated flexible sequence control at dedicated HMI’s for each unit’s operation. Quality critical data from the process systems and skidded equipment was captured and historized in the facility-wide historian.

Two PLC control enclosures were designed, built and provided. System design included ten (10) local HMI operator stations running FactoryTalk View ME located in the production suites and bulk chemical storage areas, the plant historian, and a SCADA system to provide an overview of facility operations.

QSPEC Solutions

Automation Consulting and Technical Services

Solution Overview

Requirements

Design, implement, commission and qualify an automated control system at renovated pharmaceutical facility

Solution

ControlLogix PLC’s with distributed FactoryTalk View HMI and Historian.



Results

Fully integrated and qualified manufacturing facility
21CFR Part 11 data historian
Flexible process operations

Technologies Used

Allen Bradley ControlLogix
FactoryTalk View ME HMI’s
FactoryTalk View SE System
FactoryTalk SE Historian